

# [444<sub>v1</sub>] Texline HQR

## CONDITIONS

## SUBSTRATES

## INSTALLATION

Before installing the floor covering, it must be examined and any visible issues must be identified. This product is suitable for Housing applications.

### LAYING CONDITIONS

|                    |   |   |
|--------------------|---|---|
| SUBSTRATE EVENNESS | < 5 mm / 2 m ruler<br>and < 2 mm / ruler 20 cm  | Flat, clean, sound, dry and solid substrate.  |
| STORAGE            | On dry substrate in closed and ventilated room  | Acclimatisation of unrolled flooring at least 24 hours before laying.   |
| LAYING TEMPERATURE | 15°C < T° substrate < 30°C<br>15°C < T° room < 30°C                                     | The ambient humidity and the temperature of the substrate must be such that there is no condensation at substrate level (dew point). The substrate temperature must be 3°C above the dew point. |
| TOOLS              | Pencil, cutter with straight blade and hooked blade, 2 m ruler, cork block and trimmer. |   |
| FIRST USE          | According to laying solution  | Loose lay or semi-loose lay : immediately after installation.<br>Fully bonded: allow adhesive to fully cure. Follow adhesive's supplier recommendations.  |

### USAGE CONDITIONS

|                   |                                  |  |
|-------------------|----------------------------------|--|
| USAGE TEMPERATURE | 10°C < T < 30°C                  |  |
| STATIC LOAD       | Suitable with housing furniture. | We recommend putting flat (not tapered) end caps with no embossing, with a solid contact surface, underneath furniture. PVC or polyethylene end caps are perfect for PVC floor coverings. The use of rubber end caps underneath furniture is prohibited.<br>Use a load distribution device under all legs and castors of heavy, moveable or vibrating furniture. |

# [444<sub>v1</sub>] Texline HQR

## CONDITIONS

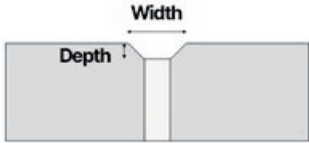
## SUBSTRATES

## INSTALLATION

### SUBSTRATE

### CONDITIONS

For installing this floor covering

|  |   |   |
|--|---|---|
| Concrete floor, painted concrete, levelling compound, cement based screed, anhydrite (calcium sulphate)-based screed | ✓ | Not subjected to moisture recovery. When laying ≤ 4 % CCM, 80 % RH - anhydrite (calcium sulphate)-based screed ≤ 0,5 % CCM  |
| Wood based substrates and parquets with ventilation underneath. Fixed on support                                     | ✓ | Keep ventilation underneath. Uneven areas over 1 mm must be sand. Joints over 3 mm must be treated with a suitable compound. Beyond these limits, levelling compound is necessary. Levelling compound use is recommended to avoid spectrum.   |
| Laminate flooring, floating parquet  | ✗ | Old flooring removal  |
| Fully bonded vinyl tiles   | ✓ | After examination and repair depending on the condition of the floor covering. If more than 10% is in bad condition, complete removal is necessary followed by new substrate preparation. If less than 10% is in bad condition, re-bond of bad areas and use of levelling compound or repair product for missing parts is allowed.              |
| Fully bonded: compact PVC / rubber / linoleum floorings  |   |   |
| Ceramic tiles  | ✓ | No unevenness between tiles. Tile joints until ≤ 5 mm wide and ≤ 1 mm deep. Beyond these limits, levelling compound is necessary. Levelling compound use is recommended to avoid tiles spectrum. <div style="text-align: right; margin-top: 10px;">  </div> |
| Acoustic underlayers   | ✗ | Old flooring removal  |
| PVC flooring loose lay or semi-loose lay   |   |   |
| Foam-backed vinyl, foam-backed linoleum  |   |   |
| Foam-backed rubber   |   |   |
| All flooring not fully bonded  |   |   |
| Radiant electric underfloor heating, max 28°C  | ! | After old flooring removal. Fully bonded installation.  |
| Reversible underfloor heating, max 28°C  |   |   |
| Underfloor heating with circulating water or heat accumulation, max 28°C   | ✓ | Allowed.<br>Heating shut down 48h before laying then gradual heating 48h after installation.  |

# [444<sub>v1</sub>] Texline HQR

CONDITIONS

SUBSTRATES

INSTALLATION

## INSTALLING AND POSITIONING THE FLOORING

### ACCLIMATISATION :

- Sweep and vacuum the surface thoroughly.
- Unroll, lay and smooth the rolls flat in the room where they will be installed.
- Check that the edge of the roll is straight: align the edge of the roll with the center axis of the room so that you have a reference.
- Leave 1 cm between each length to allow the material to acclimatise to the room in its length and width. If there is not enough space you can lay out two rolls, one on top of the other.
- **Let the unrolled material acclimatise during 24 hours.**

### INSTALLATION TIPS :

- Where possible, joints between lengths should be positioned in areas where there will not be too much heavy traffic.
- You should always try to orientate the lengths towards the wall with the main window.
- In corridors, the lengths will be positioned in the direction of the main traffic unless otherwise specified.

## INSTALLATION SOLUTIONS

The adhesive tape used must be specified and suitable with PVC flooring. It must not have rubber in its composition. Loose lay and Semi-loose lay installation is preferred (easy installation and removal).

### LOOSE LAY:

Installation without holding until 50 m<sup>2</sup> if one of the room's dimension is smaller than the width of the roll.  
Tip: peripheral holding with adhesive tape suitable for PVC flooring will make trimming the edges easier.

### SEMI-LOOSE LAY:

Adhesive tape suitable for PVC flooring is applied under joints and around the perimeter of the room.

### FULLY BONDED:

Use of acrylic glue for PVC flooring including textile backing and suitable for the substrate of the room. Follow supplier's recommendations. Recommended spatula is usually A2. It is necessary to wait the full curing time of the adhesive before furnishings.

### INSTALLATION :

- Mark the installation's reference axis on the floor (using a pencil or chalk).

For wood-based panels, ensure that the joint of the floor covering does not lay directly above a joint in the substrate. We recommend allowing an offset of at least 15 cm between the joints in the floor covering and the joints in the wood-based panels.

- Apply adhesive tape where joints will be and along the walls.
- Place the first roll along the reference axis and place others edges to edges or make an overlap to cut the 2 rolls in the same time using a cutter with straight blade to have a perfect edge to edge.

# [444<sub>v1</sub>] Texline HQR

## CONDITIONS

## SUBSTRATES

## INSTALLATION

In case of design as wood or tiles, place rolls to follow the design for a perfect result.

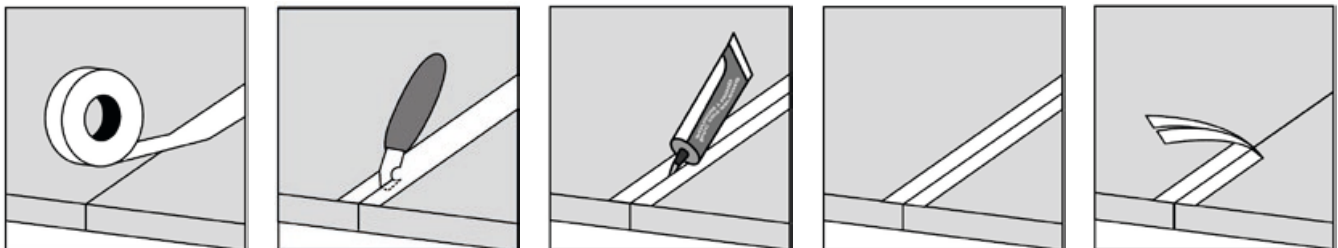
- Remove the protective paper.
- Lay the floor covering to the adhesive tape.
- Smooth the joints using the cork block.

**NB:** in case of fully bonded installation, flooring is placed and fold back half by half before being applied in acrylic glue in its working time and smoothing (follow supplier's recommendations).

## WELDING

Cold welding for textile-backed vinyl is recommended.

- Apply masking tape on the joint
- Cut the masking tape in the joint
- Inject the welding cold product into the joint to fulfill it by going backward
- Leave to dry 10 minutes
- Pull off the masking tape



- If necessary, cleaning can be done using mineral spirits.

Hot welding can be done by professional installer (refer PMO 501).

## FINISHING AND SINGULAR POINTS

### TRIMMING:

It may be done using a vinyl trimmer or a knife with hooked blade.

### DOOR THRESHOLD:

Use a threshold bar laid over flooring and / or apply adhesive tape.



### WET ROOM AND WOOD-BASED SUBSTRATE:

Edges need to be caulked with MS Polymer finishing sealant or PU sealant.